

ECOSAFE

HIGH PERFORMANCE
SAFETY
FLOOR COVERING



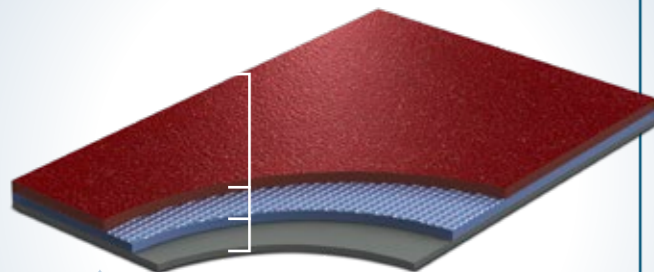
PERFORMANCE, FEATURES & BENEFITS

Excellent slip resistance, Cost effective,
Great color range, Dimensionally stable,
Anti-bacterial, 7 year warranty

RECOMMENDED USAGE

Wet areas | Ramps | Food prep areas
Anywhere safety floor is needed

CONSTRUCTION



Easy Care wear layer

Glass fibre reinforcement
PVC backing

DESCRIPTION

Construction		compact heterogeneous
Total thickness	EN ISO 24346	2,0 mm
Wear layer thickness	EN ISO 24340	0,7 mm
Width of roll	EN ISO 24341	2 m
Length of roll	EN ISO 24341	20 lm
Total weight	EN ISO 23997	2,7 kg/m ²

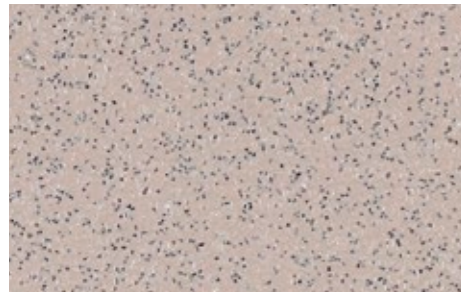
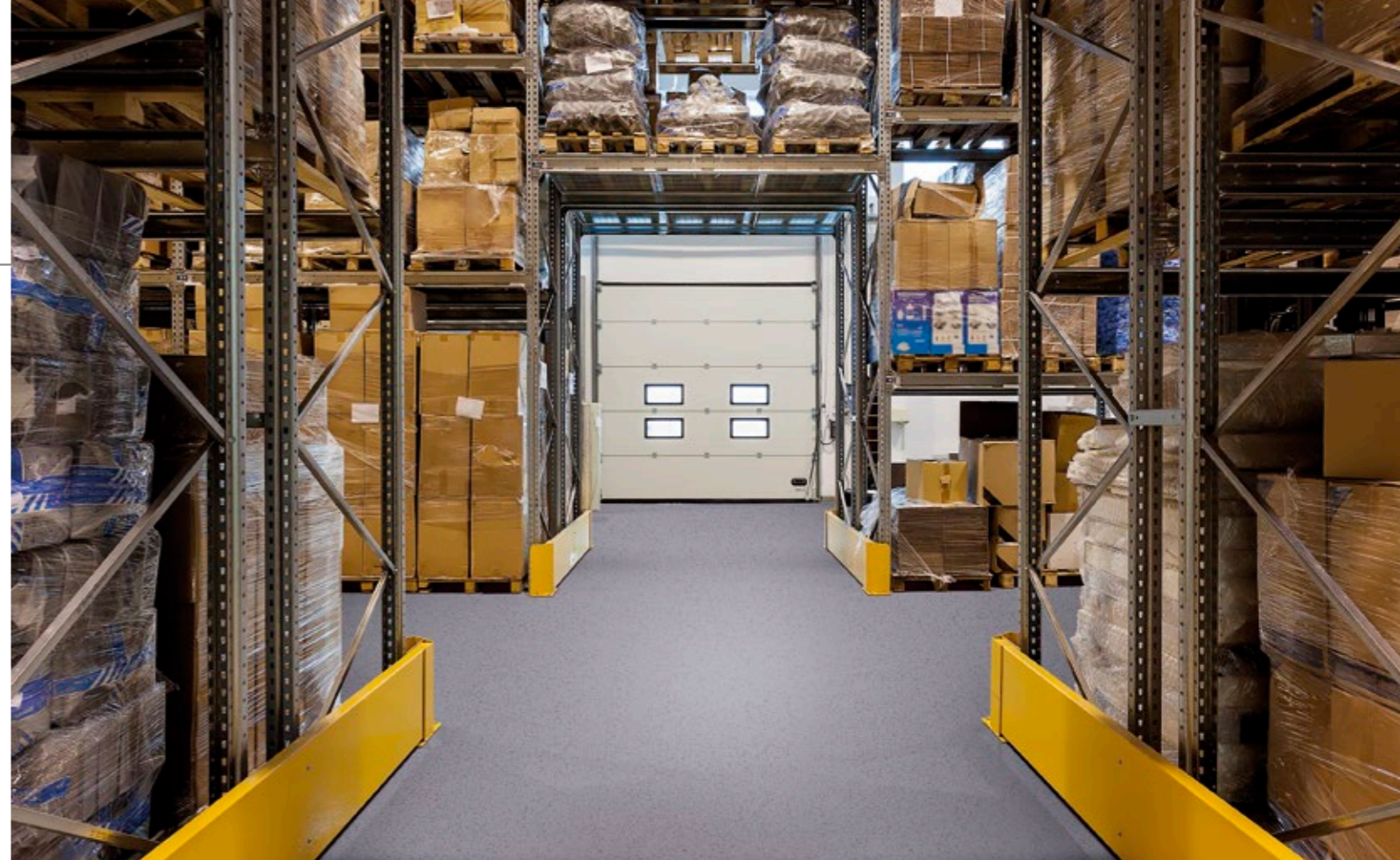
CLASSIFICATION

European classification	EN 685	class: 34/43
-------------------------	--------	--------------

PERFORMANCE

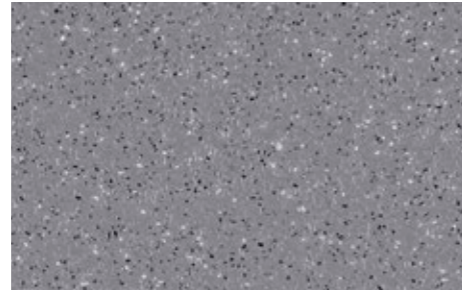
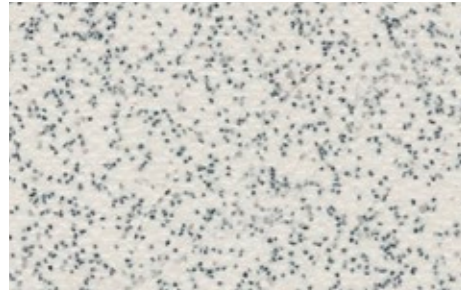
Abrasion group	EN 660-1	T
Residual indentation	EN ISO 24343	max. 0,1 mm
Dimensional stability	EN ISO 23999	max. 0,2 %
Fire resistance	EN 13501-1	class: Bfl-s1
	DIN 4102/ÖNORM	class: B1
	ASTM E 648/662	class: Class1/pass
Slip resistance	Gost 30402-94	class: G1
	DIN 51130	R10
	ASTM D2047-99	dry: 0,92/wet: 0,84
Abrasion resistance (H-18 wheel)	EN 13893	class: DS
	RRL Pendulum Test	>36 (wet test)
	ASTM D3884-01	-0,19 g/1000 circle
Abrasion resistance	ISO 9352	-0,25 g/1000 circle
Chemical resistance	EN ISO 26987	✓
	ASTM F925-02	✓
Light fastness	EN 20105 B02	grade 6
Castor chair resistance	EN ISO 4918	✓
Surface treatment		Easy Care
Anti bacterial and fungicid treatment		graboSAN
Seaming method		hot or cold welding
Warranty		7 year

ECOSAFE



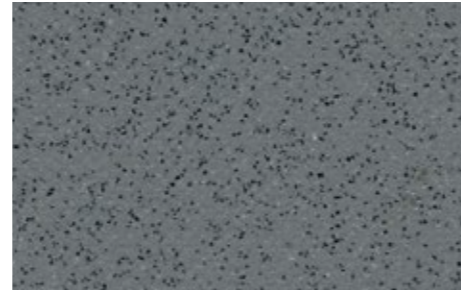
2942-20-279

2036-20-279

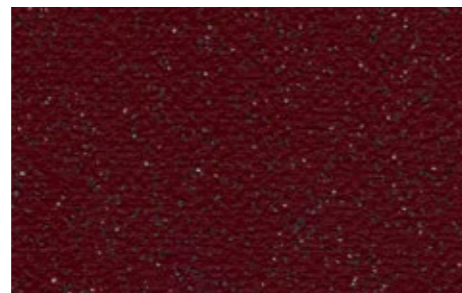


1137-20-279

1260-20-279

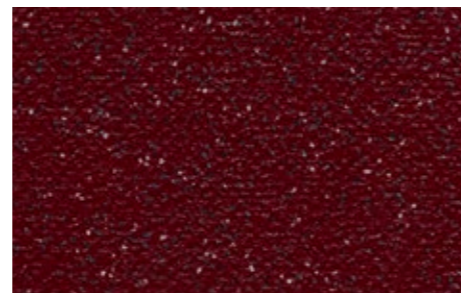


1173-20-279

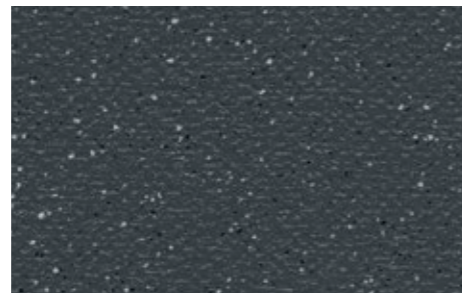
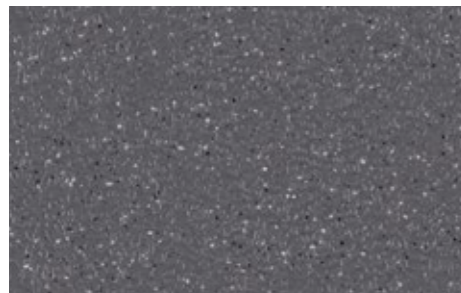


5161-20-279

5025-20-279

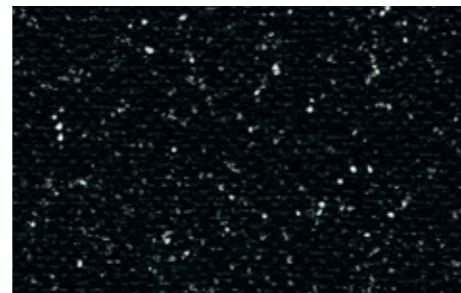


4740-20-279

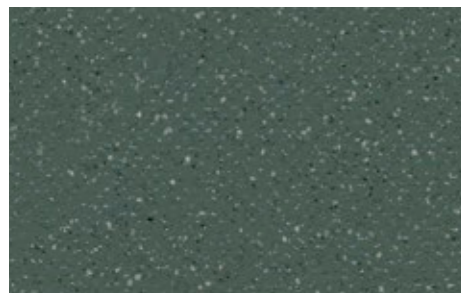


1424-20-279

1387-20-279

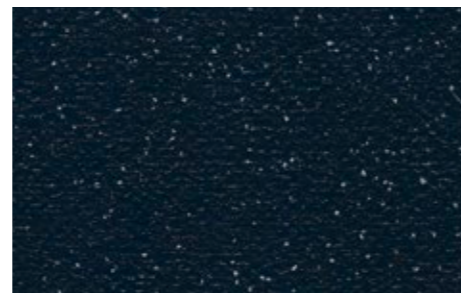


1991-20-279

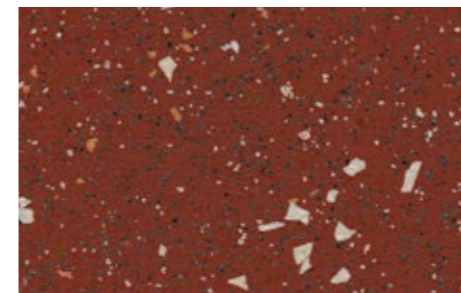


7093-20-279

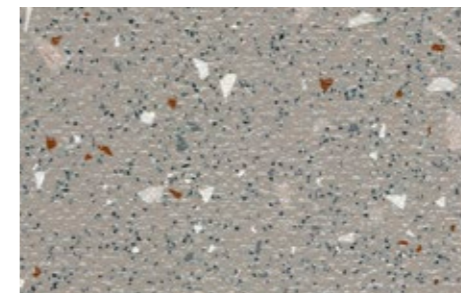
6342-20-279



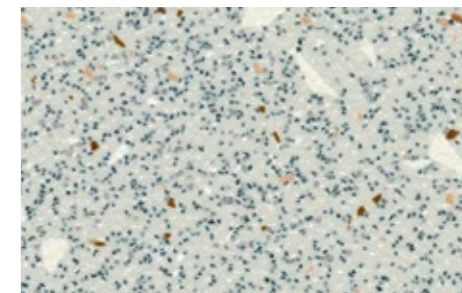
6460-20-279



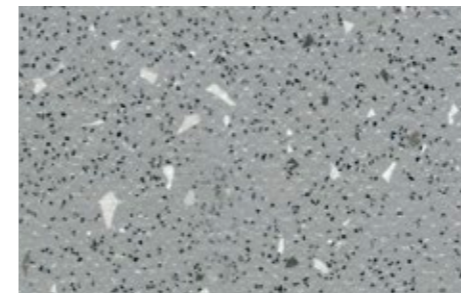
4970-665



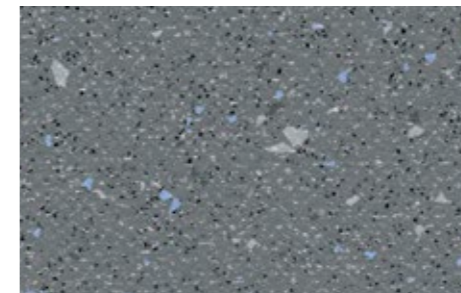
2954-659



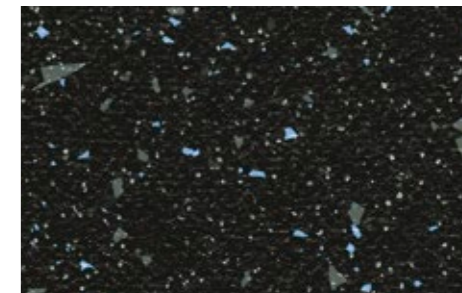
1017-664



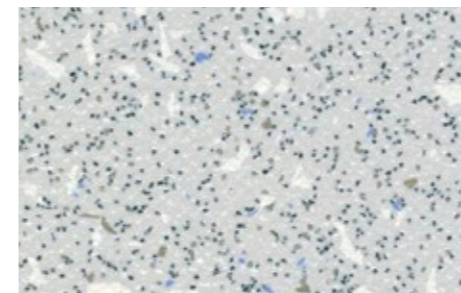
1341-662



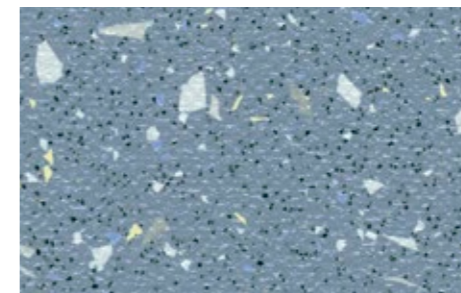
1396-660



1991-666



1204-663



6123-661